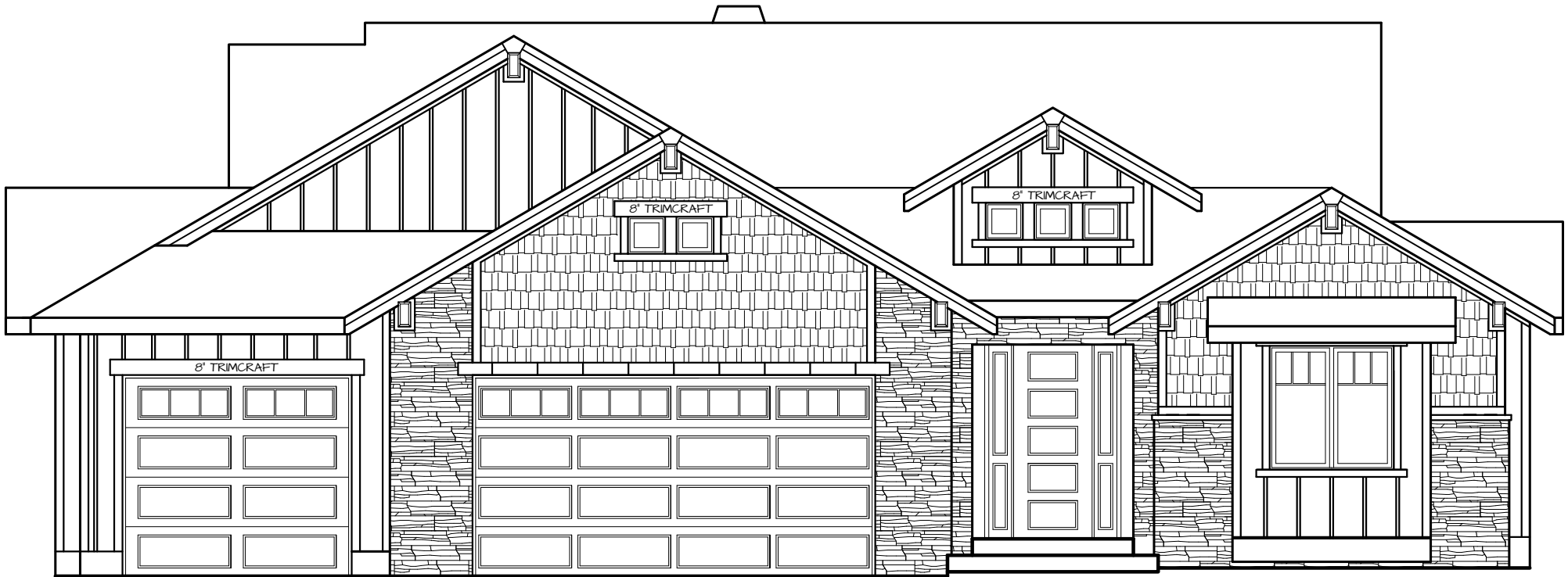


MAIN FLOOR PLAN

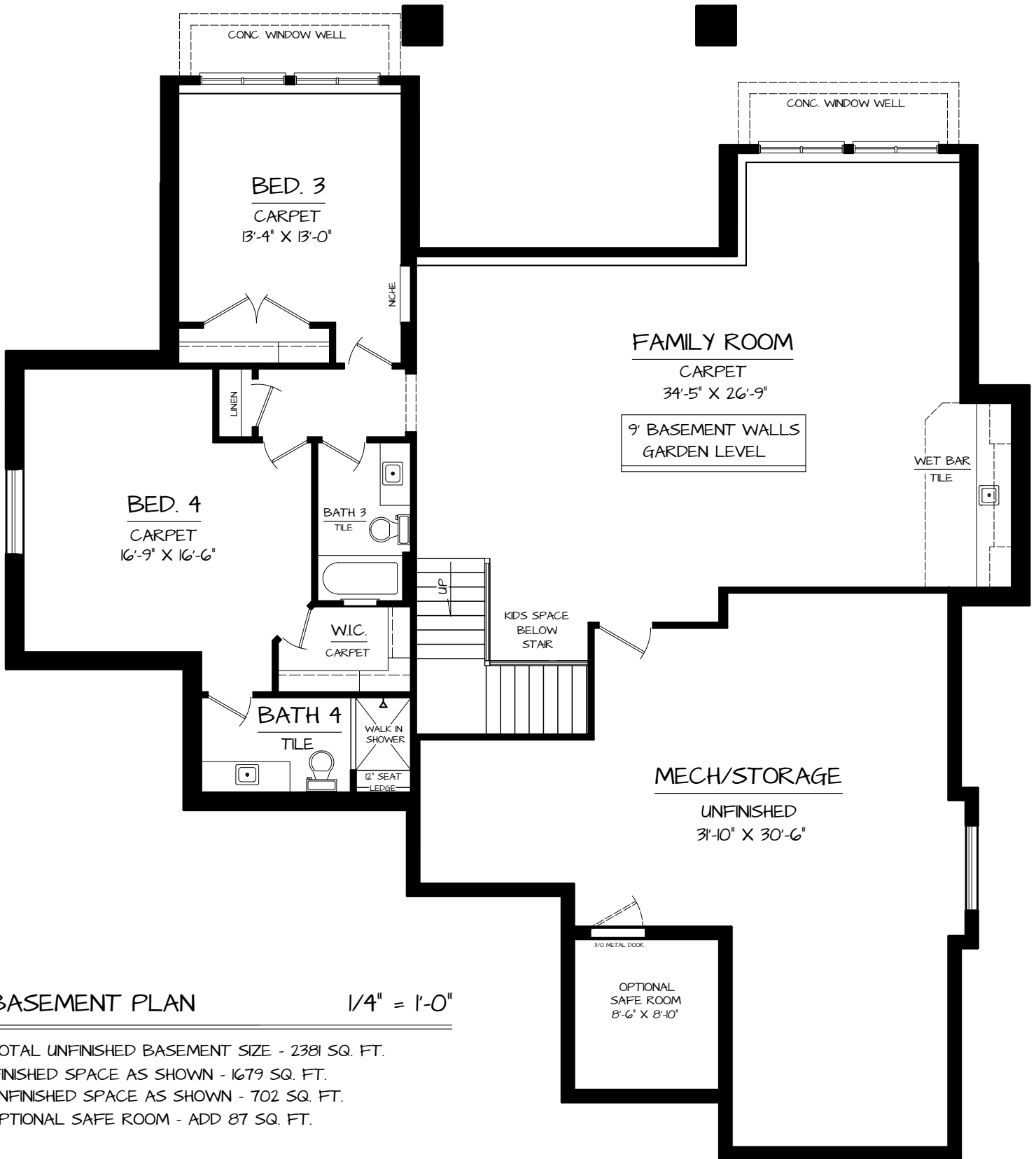
1/4" = 1'-0"

2381 SQ. FT.
GARAGE - 935 SQ. FT.



FRONT ELEVATION

1/4"=1'-0"



BASEMENT PLAN

1/4" = 1'-0"

- TOTAL UNFINISHED BASEMENT SIZE - 2381 SQ. FT.
- FINISHED SPACE AS SHOWN - 1679 SQ. FT.
- UNFINISHED SPACE AS SHOWN - 702 SQ. FT.
- OPTIONAL SAFE ROOM - ADD 87 SQ. FT.